

# Lymphatic Endothelial Cells in Vivo and in Vitro: an Immunohistochemical Evaluation of VEGFR-3 and 5'-Nase Antibodies

RuiCheng Ji, Seiji Kato

## Abstract Objective

## Methods

-Nase

-Nase

-3

## Results

-reac

-Nase,

-3.

-Nase.

## Conclusion

## Key Words

- -

-

[ ]

-Nase

-

-

-

[ ]

-

-Nase-

[ ]

[ ]

-3,

-

---

## MATERIALS AND METHODS

Animals

/

-

-

5'-Nase-mAb production

-

**Histochemical staining**

-7 μ

-Ag8.653

μ

μ

μ

-based

-Nase  
-based

-week-

-60

-Nase-treated

-

-Nase-positive  
[ ]

-positive

-

-3,

-mouse

-4

-Nase

-mouse

-1

-Sepharose

-mouse

-rabbit

**SDS-PAGE and Western blot analyses of 5'-Nase and JC815**

-rat

-PO

~

-embedding

-fixed

μ /

μ /  
-630).

μ /

μ /

-Rad

-embedding

-

-PAGE)

-

/

-mouse

-nm

-HCl,

β-mercap

-30%

-1200

-conjugated

-mouse

-di

**RESULTS**

**Thoracic duct endothelial cell (ThDEC) culture**

**Histochemistry**

-1640

μ /

-Nase

/ml

μ /ml

μ /ml

-4%

-Nase

-induced

-Nase

-Nase

-Nase-cerium

-3,

-embedding

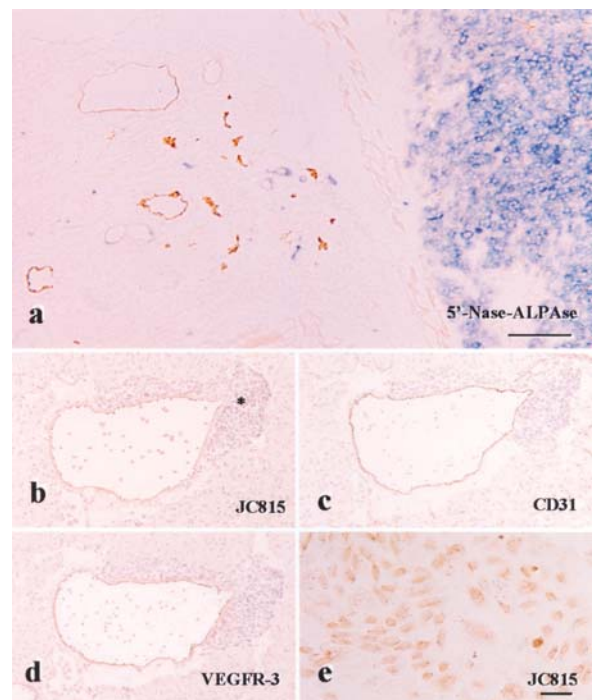
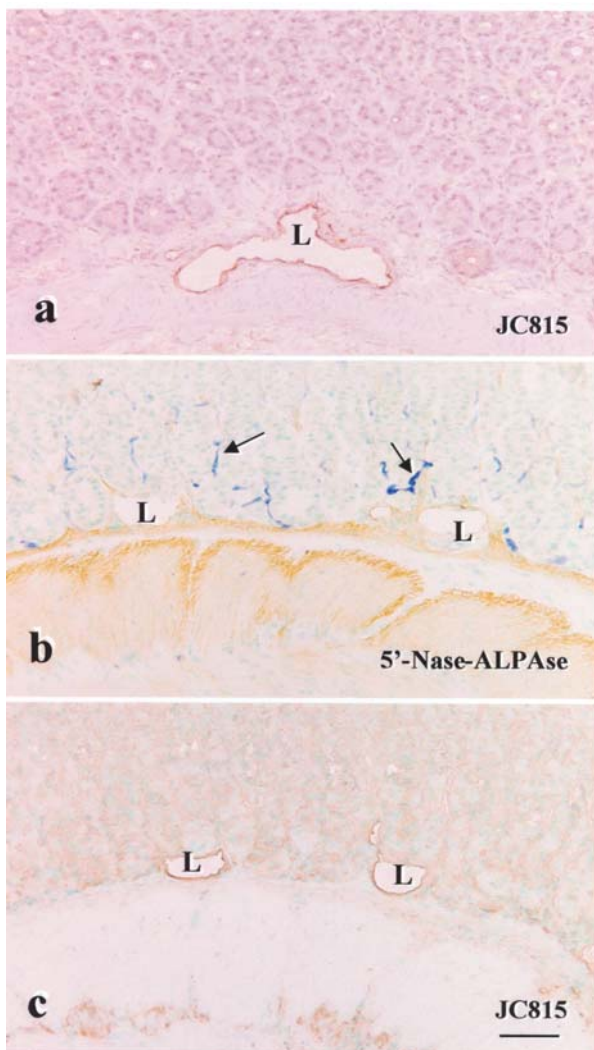
-embedding

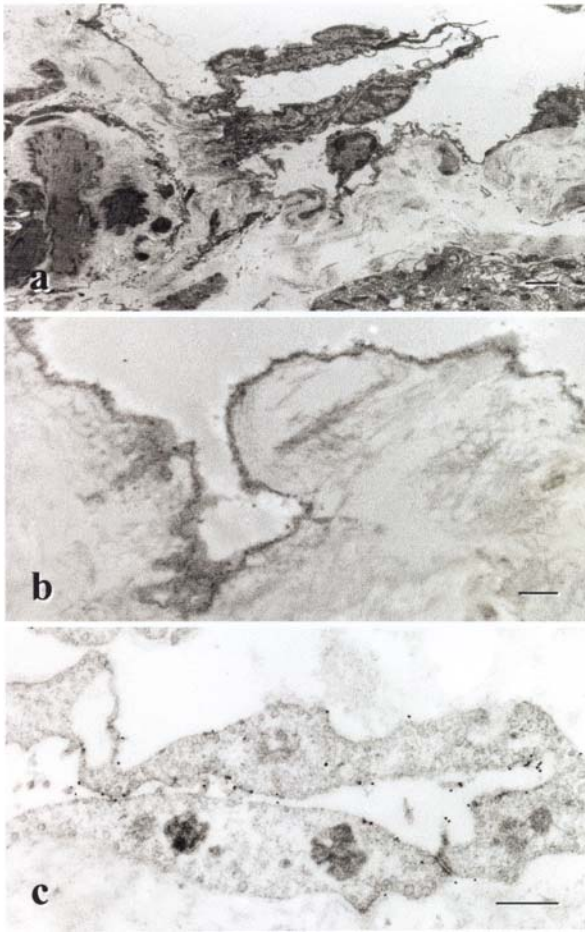
-Nase-

**Gel electrophoresis and immunoblotting**

-Nase

-Nase





### DISCUSSION

-3

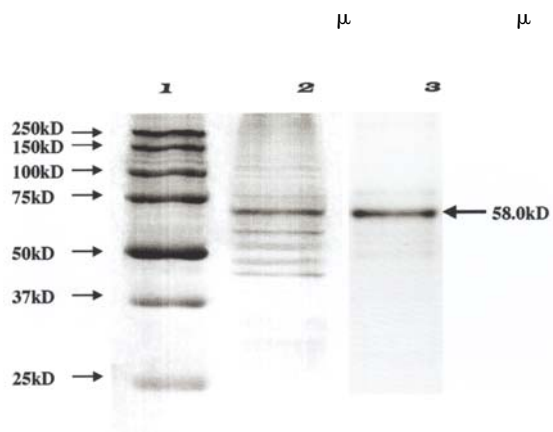
-3,

-regulation

-3,

-Nase

-Nase



-like

$\alpha$

-Nase

-Nase

**REFERENCES**

-Nase

-related

-Nase,

-en

-induced

-Nase

-expression

-expression

-Nase

-Nase